

# Security Products

Tamper-Evident Seals

Tamper-Evident Tape

Self-Seal Security Bags

Secured Storage

Emergency Boxes

Soft-Sided Cases



Intelligent Solutions  
for Instrument Care &  
Infection Control

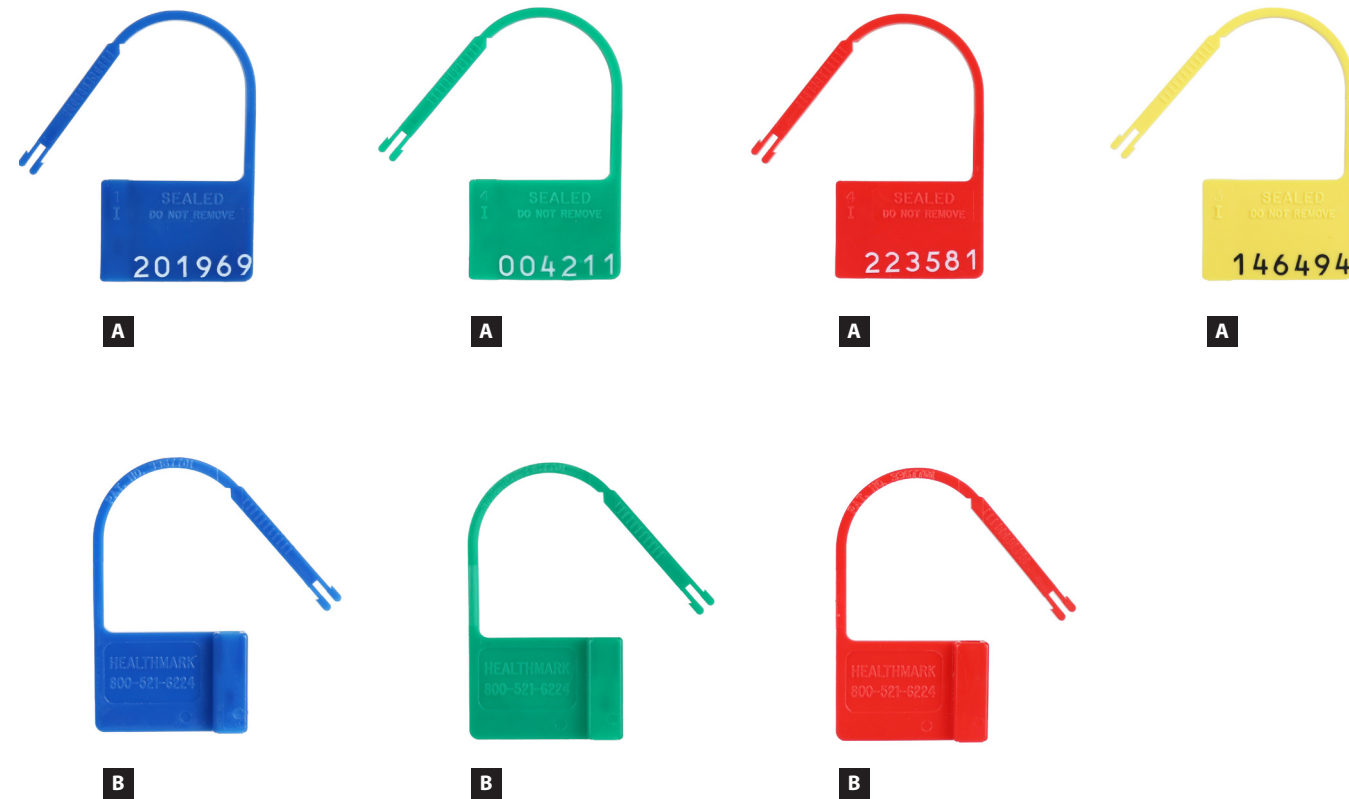
[hmark.com](https://hmark.com)

-  Cleaning Verification
-  Cleaning Chemistries
-  Protective Equipment
-  Labeling & Signage
-  Instrument Care
-  Sterilization Products
-  Storage Products
-  Instrument Trays
-  **Security Products**

### Snap Locks

Healthmark's original breakaway seals

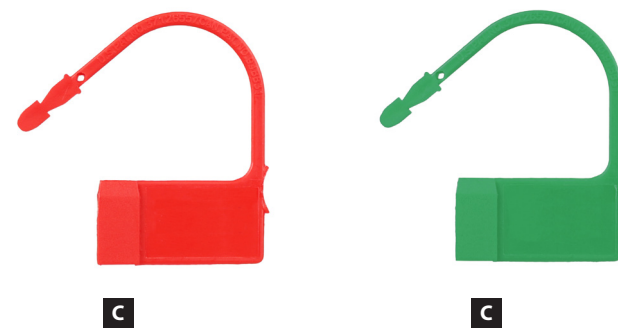
Snap Locks are Healthmark's original plastic breakaway seals. They were the first to provide tamper evidence and they are breakable by hand. Snap Locks are available numbered or unnumbered and are packaged 100 per box.



### Econo-Locks

Quality seals for an exceptional value

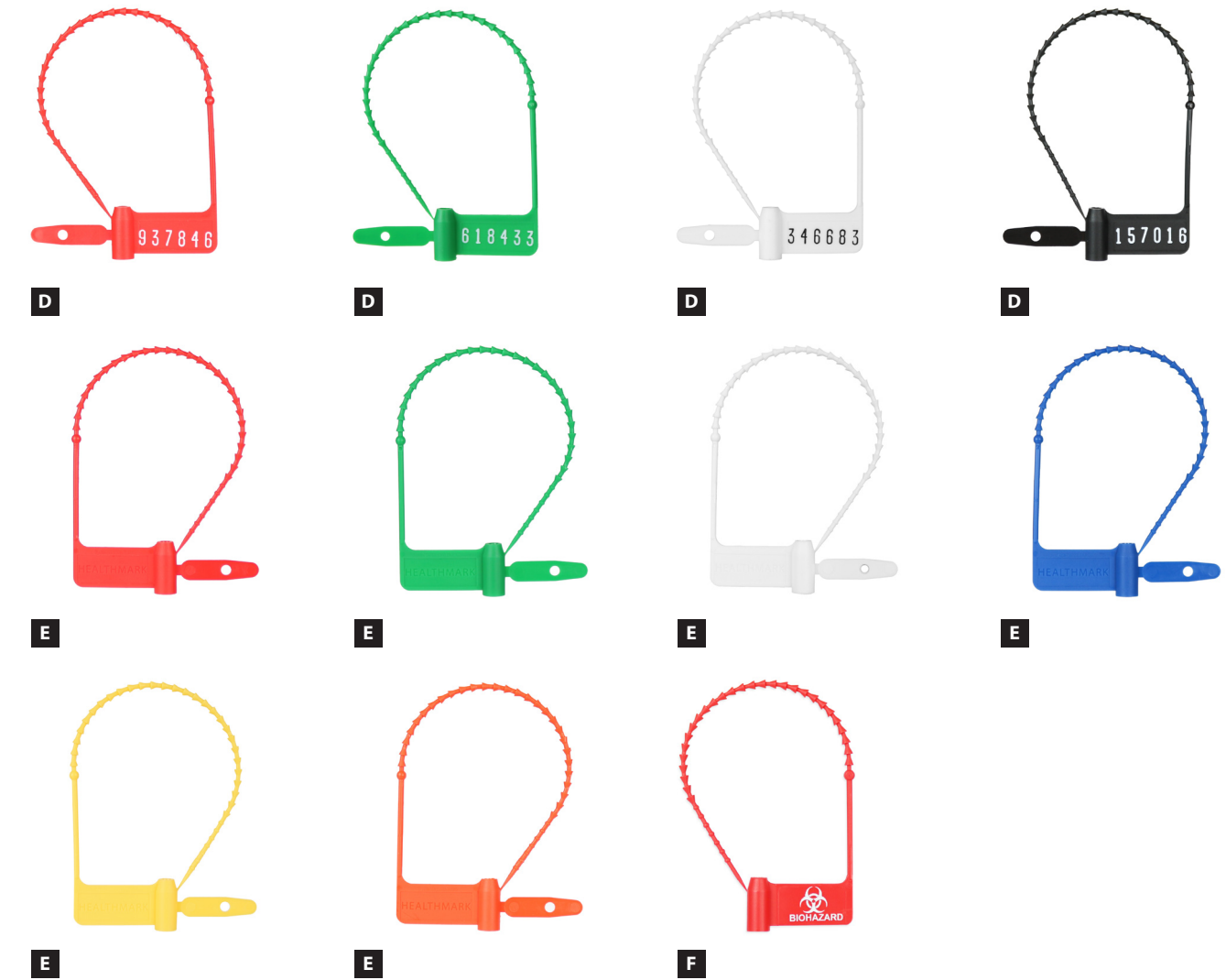
Econo-Locks are Healthmark's inexpensive plastic seal option. They feature a traditional hasp-style lock and are an exceptional value. Econo-Locks are unnumbered and packaged 100 per box.



### Cynch Locks

Pull to varied degrees of tightness

Cynch Locks are plastic locks that can be pulled to varied degrees of tightness. To break, simply tug and twist at the lock barrel. Cynch Locks are available numbered or unnumbered and are packaged 100 per box.

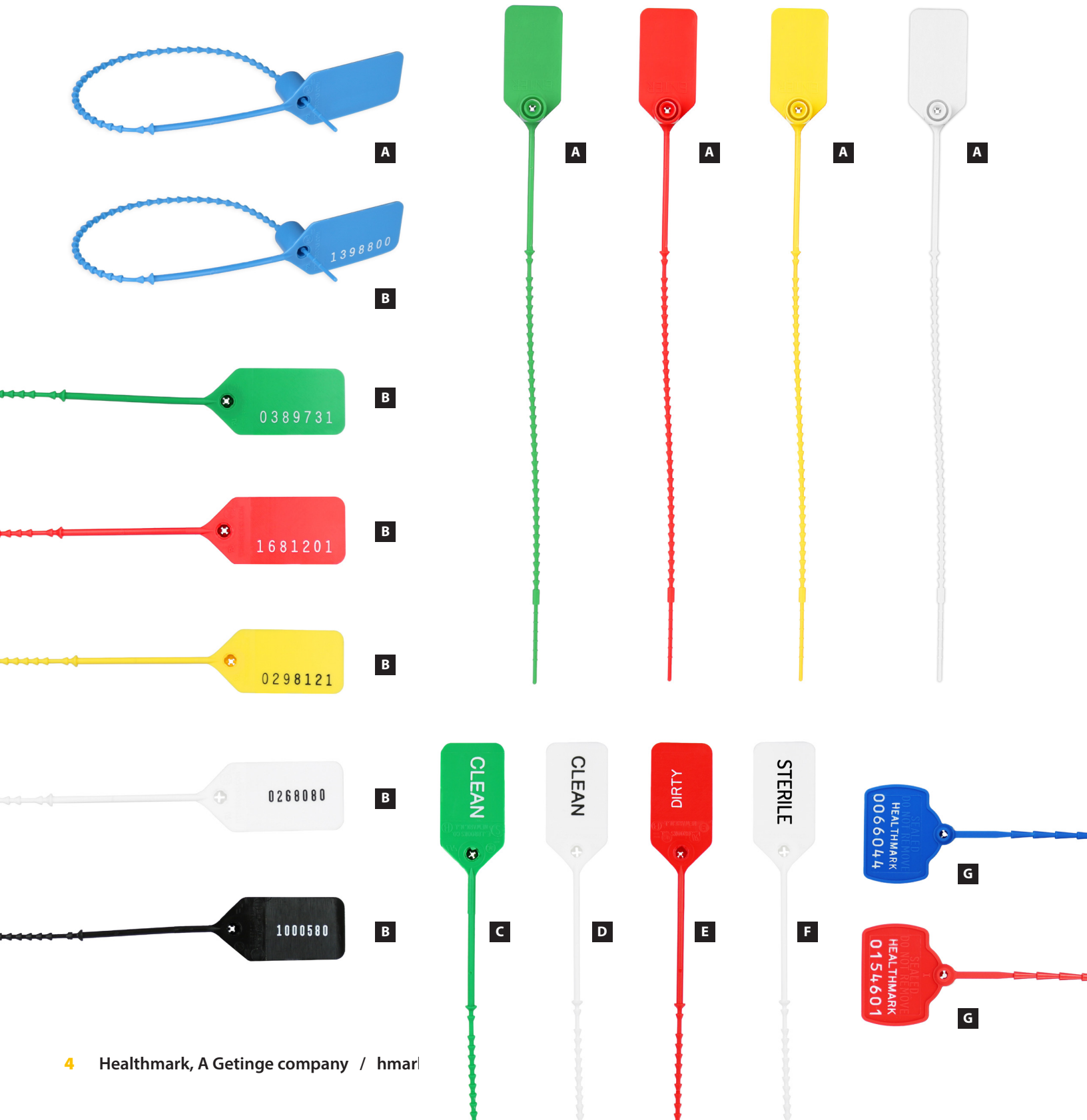


	Item Number	Style	Color	Numbered/Unnumbered	Qty
A	8050	Snap Lock	Blue, Green, Red, Yellow	Numbered	100
B	7525	Snap Lock	Blue, Green, Red	Unnumbered	100
C	7050	Econo-Lock	Red, Green	Unnumbered	100
D	6323	Cynch Lock	Red, Green, White, Black	Numbered	100
E	6020	Cynch Lock	Red, Green, White, Dark Blue, Yellow, Orange	Unnumbered	100
F	6323 RD BIO	Cynch Lock	Red, "Biohazard"	Unnumbered	100

### Pull-Tight Locks

Printed options include "Clean" and "Dirty"

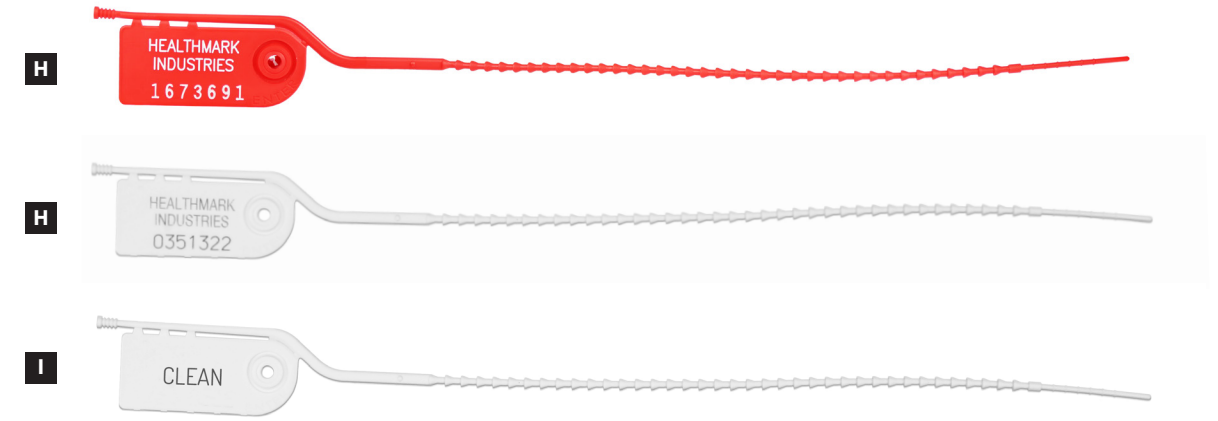
Pull-Tight Locks are plastic locks that can be pulled to varied degrees of tightness. They are ideal when a tight-fitting seal is required. Pull-Tight Locks are available numbered or unnumbered and are packaged 100 per box.



### Easy Open Pull-Tight Locks

Features a tear-off rod for easy removal

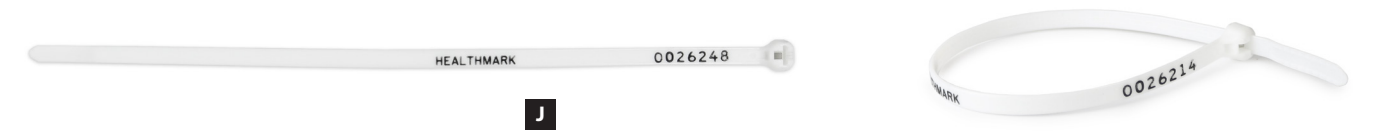
Easy Open Pull-Tight Locks are plastic security seals that are easy to apply and easy to remove. These numbered seals are available in red or white and can be pulled to varied degrees of tightness and include an easy to break tear-off rod.



### Cable Style Lock

Stainless-steel barb for reliability

Cable Style Locks are adjustable, cynch-tight nylon security straps with a steel locking tooth for added strength. Cable Style locks are white, numbered and feature a stainless-steel barb that provides consistent performance and reliability.



	Item Number	Style	Color	Numbered/Unnumbered	Length	Qty
A	5030	Pull-Tight Lock	Blue, Green, Red, Yellow, White	Numbered	9.00"	100
B	9393	Pull-Tight Lock	Blue, Green, Red, Yellow, White, Black	Unnumbered	9.00"	100
C	5030 GN CLN	Pull-Tight Lock	Green / "Clean"	Unnumbered	9.00"	100
D	5030 WT CLN	Pull-Tight Lock	White / "Clean"	Unnumbered	9.00"	100
E	5030 RED DIRTY	Pull-Tight Lock	Red / "Dirty"	Unnumbered	9.00"	100
F	5030 WT STERILE	Pull-Tight Lock	White / "Sterile"	Unnumbered	9.00"	1000
G	8323	Pull-Tight Lock	Blue, Red	Numbered	8.00"	100
H	0345	Easy Open Pull-Tight Lock	Red, White	Unnumbered	10.00"	100
I	0345 WT CLN	Easy Open Pull-Tight Lock	White / "Clean"	Unnumbered	10.00"	100
J	8525	Pull-Tight Lock	White	Numbered	8.00"	100

### Twist Locks

Easy-to-break, numbered seals

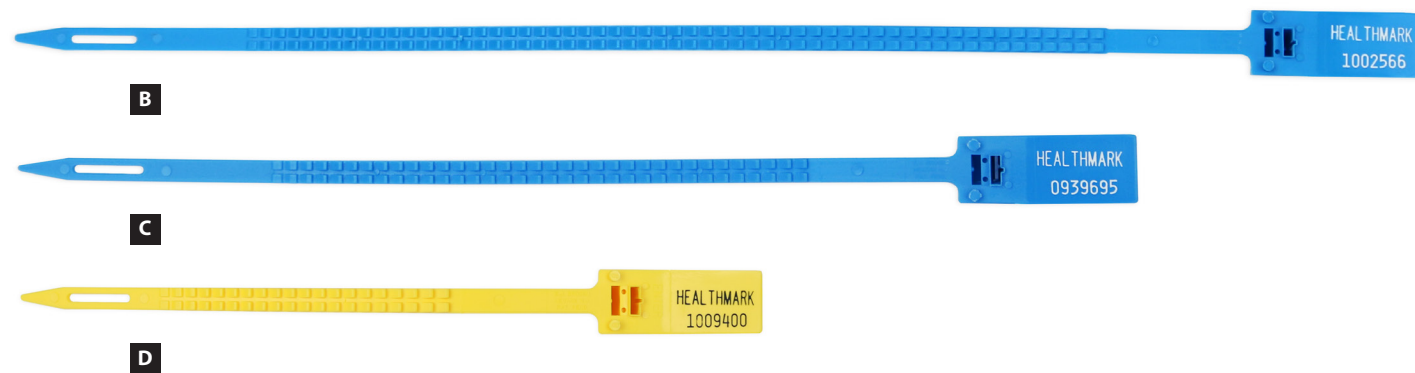
Twist Locks are considered one of the easiest seals to lock and break by hand. Pull on it, twist it or snap it at the score to break the seal. Offered in a variety of colors, all Twist Locks are numbered and they are packaged 100 per box.



### Long Cynch Locks

15, 11 and 7 inch lengths available

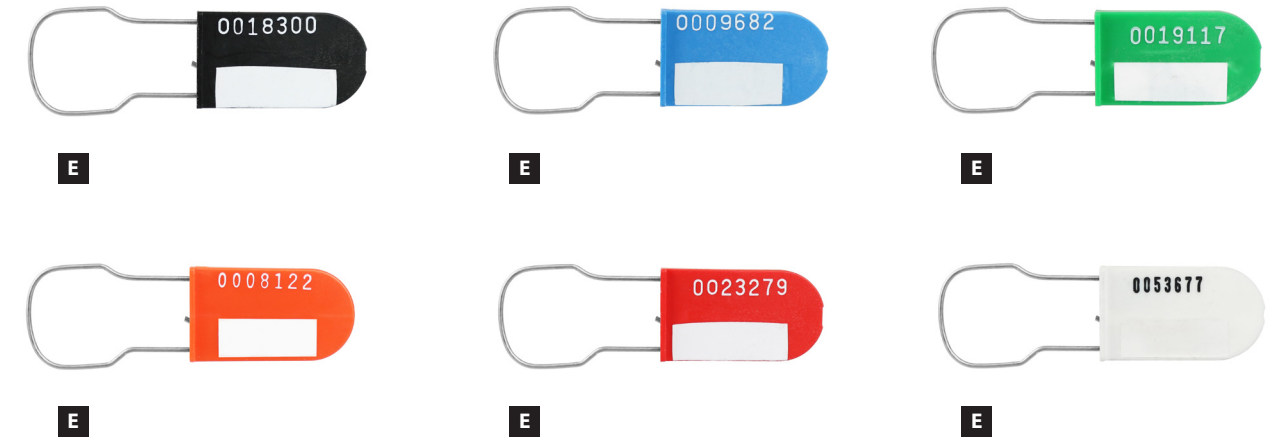
Long Cynch Locks are available in 3 lengths: 15 inch, 11 inch, and 7 inch. The cynch design of these locks allows them to be used in a variety of situations. All 3 styles of Long Cynch Locks are numbered and packaged 100 per box.



### Plastic & Wire Locks

Tough plastic body and wire hasp

Plastic & Wire Locks are seals that are made of a tough plastic body and a wire hasp. They are available in a variety of colors and each includes a write-on panel. All Plastic & Wire Locks are numbered and packaged 100 per box.



### Loop Locks

Ideal when a longer seal is needed

Loop Locks are ideal when a long seal is needed. They can be quickly and easily sealed and they are also easy to open with a tug. Available in yellow or orange, all Loop Locks are numbered and packaged 100 per box.

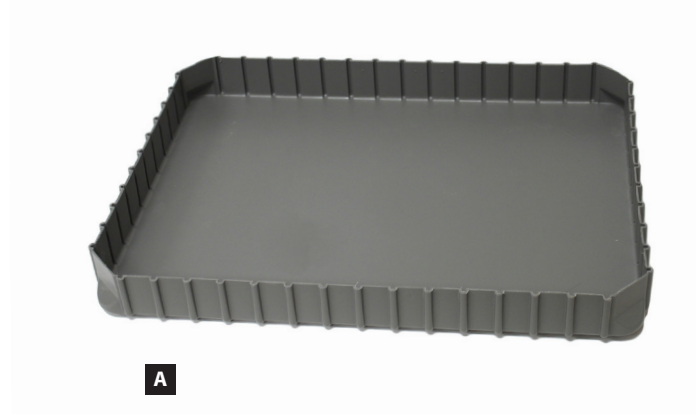


	Item Number	Style	Color	Numbered/Unnumbered	Qty
A	5224	Twist Lock	Light Blue, Green, Red, Orange, Yellow, Purple, Black, White	Numbered	100
B	927-15 BL	15" Long Cynch Lock	Blue	Numbered	100
C	927-11 BL	11" Long Cynch Lock	Blue	Numbered	100
D	927-07	7" Long Cynch Lock	Yellow	Numbered	100
E	PWR-6	Plastic & Wire Lock	Black, Blue, Green, Orange, Red, White	Numbered	100
F	9075-2	Loop Lock	Yellow, Orange	Numbered	100

### Swap & Go Crash Cart Boxes

Keep crash cart materials readily available

Instantly restock crash carts while organizing and standardizing drawer layout with the Swap & Go Crash Cart Box. When used along with our optional dividers and Self-Seal Security Bags, users can keep crash cart materials readily stocked and available for replacement without interruption.



A

### Lockable Vaultrays

Tough, lockable trays for secured storage

Lockable Vaultrays are available in multiple sizes with clear or opaque hinged covers. Each is made of tough ABS plastic and includes breakaway seals for closed, use-controlled storage of supplies. Optional dividers are also available for organization.



B



C

### Self-Seal Security Bags

Secure and protect items for later use

Self-Seal Security Bags are available in two sizes/styles. Each option includes an adhesive seal to secure items inside. This is an ideal solution for crash cart supplies when used along with Healthmark's Swap & Go Crash Cart Boxes.



D



E

### Tamper-Evident Tape

Clearly identify items as "Secured"

Identify contents as "SECURED" for special or limited access with this red Tamper-Evident Tape. The roll includes 325 adhesive seals that are 1x4 inches. The Tamper-Evident Tape also includes fillable fields for "BY" and "DATE".

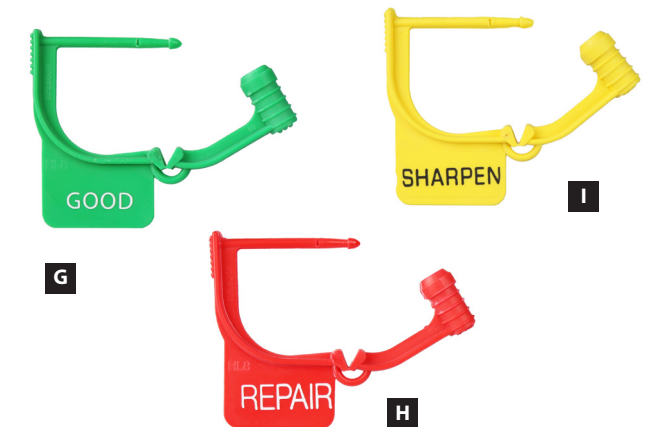


F

### Instrument Repair Tags

Tamper-evident, preprinted tags

Identify instruments requiring repair, sharpening or "good" with brightly color-coded tags. Tags are preprinted with "Repair," "Sharpen" and "Good". Instrument Repair Tags are steam, EtO and Plasma autoclavable.



G

H

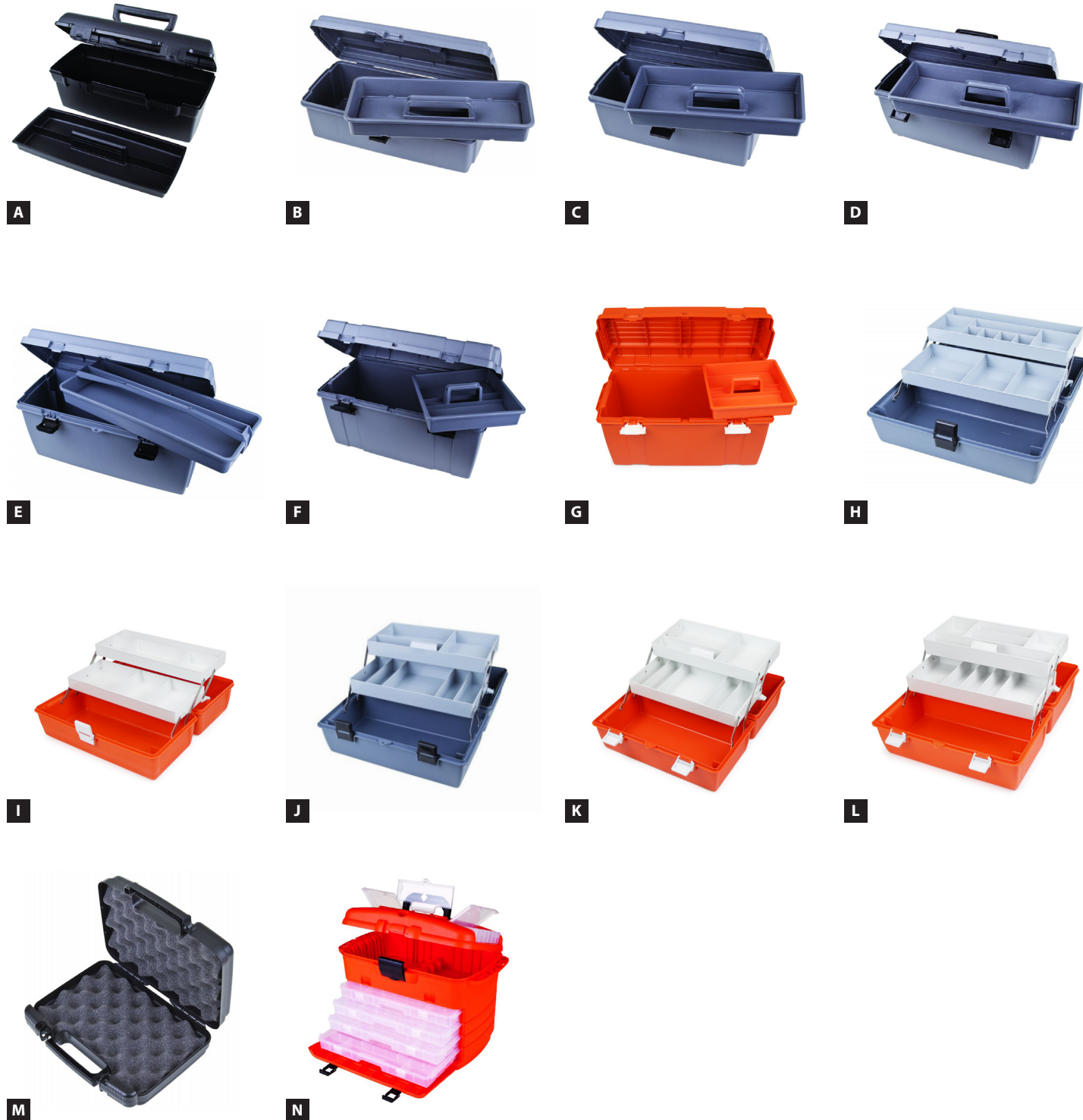
I

	Item Number	Description	Length	Width	Height	Qty
A	400-2CC	Full Drawer Box	22.375"	17.50"	2.50"	EA
	300-2CC	Half Drawer Box	10.75"	16.375"	2.25"	EA
B	300-4VTC	Lockable Vaultray - Clear Cover	16.375"	10.875"	4.25"	EA
	50-7VTC	Lockable Vaultray - Clear Cover	16.375"	17.75"	7.00"	EA
	400-8VTC	Lockable Vaultray - Clear Cover	22.375"	17.50"	8.00"	EA
	400-4VTO	Lockable Vaultray - Opaque Cover	22.375"	17.50"	4.25"	EA
C	300-4VTO	Lockable Vaultray - Opaque Cover	16.375"	10.875"	5.125"	EA
	2029	Self-Seal Security Bag	20.00"	29.00"		20
E	2430-6700	Self-Seal Security Bag (H-Perforated)	24.00"	30.00"		250
F	TEL-1400R	Tamper-Evident Tape	4.00"	1.00"		RL-325
G	994-G	"GOOD" Lock				100
H	994-R	"REPAIR" Lock				100
I	994-S	"SHARPEN" Lock				100

### Med Boxes, Cases & Chests

Secure items inside with breakaway seals

Healthmark's Med Boxes, Cases & Chests are available in a variety of sizes, colors and compartment/tray styles. Items can be placed inside and secured using a breakaway tamper-evident seal for quick access when needed.



### Soft-Sided Cases

Easy-to-carry cases for paramedics

Healthmark's Soft-Sided Cases are available in three styles: Duffel, Backpack and Fanny Pack. Each includes a zipper closure, multiple compartments and pockets to organize and carry a variety of tools and accessories.



	Item Number	Color	Details	Length	Width	Height	Qty
<b>A</b>	1310-2 BK	Black	2 Compartments	13.00"	6.00"	5.625"	EA
<b>B</b>	1410-2 GY	Gray	2 Compartments	14.50"	7.50"	5.25"	EA
<b>C</b>	1610-2 GY	Gray	2 Compartments	16.625"	8.625"	7.00"	EA
<b>D</b>	2010-2 GY	Gray	2 Compartments	19.875"	8.875"	8.375"	EA
<b>E</b>	2310-2 GY	Gray	2 Compartments	23.00"	10.50"	11.375"	EA
<b>F</b>	2710-2 GY	Gray	2 Compartments	27.50"	13.375"	14.00"	EA
<b>G</b>	2710-2 OR	Orange	2 Compartments	27.50"	13.375"	14.00"	EA
<b>H</b>	1611-2 GY	Gray	7 Compartments	16.50"	8.75"	7.50"	EA
<b>I</b>	1611-2 OR	Orange	7 Compartments	16.50"	8.75"	7.50"	EA
<b>J</b>	1711-2 GY	Gray	9 Compartments	17.625"	10.25"	8.375"	EA
<b>K</b>	1711-2 OR	Orange	9 Compartments	17.625"	10.25"	8.375"	EA
<b>L</b>	1910-2 OR	Orange	11 Compartments	19.00"	10.75"	10.125"	EA
<b>M</b>	6780-1	Black	Drug Case	12.00"	8.00"	2.625"	EA
<b>N</b>	8040-2 ORANGE	Orange	Med Chest	20.50"	12.00"	14.50"	EA
<b>O</b>	911-82211	Red	EMS Duffel	18.00"	13.25"	12.00"	EA
<b>P</b>	911-83311WP	Red	EMS Backpack w/ Patch	11.00"	8.00"	20.00"	EA
<b>Q</b>	911-82612	Blue	Fanny Pack	10.50"	5.50"	4.25"	EA



A Getinge company

Intelligent Solutions  
for Instrument Care &  
Infection Control

[hmark.com](http://hmark.com)

## Healthmark, A Getinge company

18600 Malyn Blvd.

Fraser, Michigan 48026

USA

### Call Us

Toll Free: 800.521.6224

International: +1.586.774.7600

Fax: 586.491.2113

### Email Us

Contact: [healthmark@hmark.com](mailto:healthmark@hmark.com)

Order Inquiries: [hmorders@hmark.com](mailto:hmorders@hmark.com)

